

OCTOBER 4-5, 2024

HEARTLAND LEAD MANAGEMENT SYMPOSIUM

***Educating health care providers together
to improve patient care and outcomes***

FRIDAY, OCTOBER 4, 2024: FELLOWS EVENT

SATURDAY, OCTOBER 5, 2024: FULL CONFERENCE

**IOWA MEMORIAL UNION (IMU)
125 N MADISON ST
IOWA CITY, IOWA**

Co-hosted by the University of Iowa Heart
and Vascular Center and Mayo Clinic

IOWA
HEALTH CARE



TARGET AUDIENCE

- Physicians
- Nurse/Nurse Practitioners

OBJECTIVES

- Define the indications for lead extraction in cases of infection, malfunction, and access issues.
- Review the latest evidence-based guidelines and recommendations for lead management.
- Discuss the challenges and potential complications associated with lead extraction procedures.
- Introduce and demonstrate the various tools and techniques available for lead extraction.
- Provide hands-on workshops or simulations to familiarize attendees with lead extraction procedures.
- Share best practices and case studies from experienced practitioners in lead management.
- Explore strategies for minimizing risks and optimizing patient outcomes during lead extraction.
- Address ethical considerations and patient communication strategies related to lead management decisions.
- Foster networking opportunities for attendees to connect with peers and experts in the field.
- Establish a framework for ongoing education and support for electrophysiologists involved in lead management.

REGISTRATION

Physician.....	\$150
Nurse/Allied Health Professional.....	\$75
UI Physician	\$75
UI Nurse/Allied Health Professional.....	\$40
Fellow	\$75
Resident/Student.....	No charge

While registration is open until the start of the symposium, we encourage early registration to enable us to provide the best possible service to participants. A \$25 fee will be charged for canceled registrations. No refunds will be given for cancellations made after September 27, 2024.

 bit.ly/3WYEQq2

LOCATION AND PARKING

The Heartland Lead Management Symposium will take place in the Main Lounge of the Iowa Memorial Union (IMU) on the University of Iowa campus at 125 N Madison St, Iowa City, Iowa.

There are two parking ramps near the IMU. The IMU Parking Ramp is located at 120 North Madison Street. Access to this facility is across the street from the east side of the IMU.

The North Campus Ramp, at 340 North Madison Street, is accessed from the north end of Madison Street near North Hall.

COURSE DIRECTORS

- Paari Dominic, MD
- Mike Powers, MD, MBA
- Siva Mulpuru, MD, MPH
- Yong-Mei Cha, MD

ACCREDITATION



In support of improving patient care, this activity has been planned and implemented by the University of Iowa Roy J. and Lucille A. Carver College of Medicine and the Iowa Statewide

Perinatal Care Program. The University of Iowa Roy J. and Lucille A. Carver College of Medicine is jointly accredited by the Accreditation Council for Continuing Medical Education (ACCME), the Accreditation Council for Pharmacy Education (ACPE), and the American Nurses Credentialing Center (ANCC), to provide continuing education for the healthcare team.

Physician: The University of Iowa Carver College of Medicine designates this live activity for a maximum of 7.0 AMA PRA Category 1 Credits™. Physicians should claim only the credit commensurate with the extent of their participation in the activity.

Nurse: The University of Iowa Roy J. and Lucille A. Carver College of Medicine designates this activity for a maximum of 7.0 ANCC contact hours.

All other participants will receive a certificate of participation for this conference upon completion of the online evaluation. It is the responsibility of each attendee to determine if the continuing education programs they attend meet the requirements of their professional licensure board.



ABIM MOC: Successful completion of this CME activity, which includes participation in the evaluation component, enables the participant to earn up to 7.00 MOC points in the American Board of Internal Medicine's (ABIM) Maintenance of Certification (MOC) program. It is the CME activity provider's responsibility to submit participant completion information to ACCME for the purpose of granting ABIM MOC credit.

CREDITS

AMA PRA Category 1 Credits™ (7.00 hours)
ANCC Contact Hours (7.00 hours)
Non-Physician Attendance (7.00 hours)

DISCLOSURE POLICY

The University of Iowa Roy J. and Lucille A. Carver College of Medicine adheres to the ACCME's Standards for Integrity and Independence in Accredited Continuing Education. Any individuals in a position to control the content of a CE activity, including faculty, planners, reviewers, or others are required to disclose all financial relationships with ineligible companies whose primary business is producing, marketing, selling, re-selling, or distributing healthcare products used by or on patients. All relevant financial relationships have been mitigated prior to the commencement of the activity.

The University of Iowa prohibits discrimination in employment and educational programs and activities on the basis of race, creed, color, religion, national origin, age, sex, pregnancy, disability, genetic information, status as a U.S. veteran, service in the U.S. military, sexual orientation, gender identity, associational preferences, or any other classification that deprives the person of consideration as an individual. The university also affirms its commitment to providing equal opportunities and equal access to university facilities. For additional information on nondiscrimination policies contact the University of Iowa Division of Access Opportunity & Diversity, 202 Jessup Hall Iowa City, Iowa. 319-335-0705 or diversity@uiowa.edu

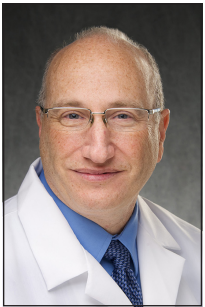
Individuals with disabilities are encouraged to attend all University of Iowa sponsored events. If you are a person with a disability who requires accommodation in order to participate in this program please contact the Continuing Medical Education Division in advance at 319-335-8599.

AGENDA: FRIDAY, OCTOBER 4, 2024

- 6:30 - 7:00 p.m.** **Registration and Hors-d'oeuvres**
- 7:00 p.m.** **Welcome Remarks**
Paari Dominic, MD
- 7:05 - 7:30 p.m.** **Infectious Lead Extractions**
Robert Lewis, MD, MS, PhD
- 7:30 - 7:55 p.m.** **Training for Lead Extraction—A Surgeon's Perspective**
Travis Pollema, DO
- 7:55 - 8:20 p.m.** **How to Negotiate and Set Up a Lead Extraction Program in Your New Job**
Steven Bailin, MD
- 8:20 - 9:00 p.m.** **Lead Extraction Jeopardy**

SPEAKERS

Steven Bailin, MD



Clinical Professor of Internal Medicine-
Division of Cardiovascular Medicine
Director, Clinical Cardiac
Electrophysiology Fellowship Training
University of Iowa Health Care

Travis Pollema, DO



Assistant Professor
Director, ECMO Program
Co-Director, Lead Management Program
UC San Diego Health

Robert Lewis, MD, MS, PhD



Assistant Professor of Medicine
Duke University School of Medicine

AGENDA: SATURDAY, OCTOBER 5, 2024

7:30 - 8:00 a.m. **Registration and Continental Breakfast**

8:00 a.m. **Welcome Remarks**
Yong Mei Cha, MD

8:05 - 8:30 a.m. **The Anatomy of Lead Extraction**
Sam Asirvatham, MD, FACC, FHRS

8:30 - 8:55 a.m. **Lead Engineering and Relevance to Lead Extraction**
Pierce Vatterott, MD

8:55 - 9:20 a.m. **Building a Lead Extraction Program**
Ulrika Birgersdotter Green, MD

9:20 - 9:45 a.m. **Imaging in Lead Extraction**
Rob Schaller, DO

9:45 - 10:00 a.m. **Audience Mobile Poll/Q&A**
Last four presenters above

10:00 - 10:15 a.m. **BREAK**

10:15 - 10:40 a.m. **Extraction of Newer Devices**
Dwayne Campbell, MD

10:40 - 11:05 a.m. **Extraction of Unique Leads-Fineline/Ingevity/Attain stability**
Mike Powers, MD, MBS

11:05 - 11:30 a.m. **Tricuspid Valve in Lead Extractions**
Paari Dominic, MD

11:30 - 11:55 a.m. **Pediatric Extractions**
Ben Hale, MD

11:55 a.m. - 12:10 p.m.
Audience Mobile Poll/Q&A
Last four presenters above

12:15 - 1:15 p.m. **LUNCH**

1:15 - 1:40 p.m. **Safety in lead extractions**
Jude Clancy, MD, FHRS

1:40 - 1:55 p.m. **The Role of the Cardiothoracic Surgeon in Lead Extractions**
Roger Carrillo, MD

1:55 - 2:20 p.m. **Extractions of Leads with Large Vegetations**
Yong Mei Cha, MD

2:20 - 2:45 p.m. **The Difficult and Calcified Leads**
George Crossley, MD, FHRS, FACC

2:45 - 3:00 p.m. **Audience Mobile Poll/Q&A**
Last four presenters above

3:00 - 3:15 p.m. **BREAK**

3:15 - 3:45 p.m. **The Difficult CS Lead**
Chuck Love, MD, FACC, FAHA, FHRS, CCDS

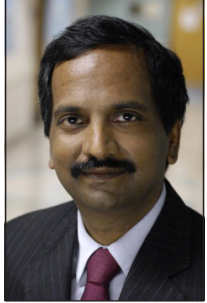
3:45 - 4:15 p.m. **Femoral Extraction**
Siva Mulpuru, MD, MPH

4:15 - 4:30 p.m. **Guidelines on Lead Infection**
Jacob Hodges, MD
Daniel DeSimone, MD, FIDSA

4:30 p.m. **Closing Remarks**
Mike Powers, MD, MBS

SPEAKERS

Samuel J. Asirvatham, MD, FACC, FHRS



James M. and Lee S. Vann Professor in Cardiovascular Diseases
Professor of Medicine and Pediatrics
Consultant, Departments of Cardiovascular Medicine, Anatomy & Physiology and Biomedical Engineering
Mayo Clinic College of Medicine
Vice Chair, Cardiology Innovation
Program Director, EP Fellowship Program
Medical Director, Electrophysiology Laboratory

Yong-Mei Cha, MD



Consultant, Department of Cardiovascular Medicine, Heart Rhythm Division
Professor of Medicine, Mayo Clinic School of Medicine
Mayo Clinic

Ulrika Birgersdotter-Green, MD



Professor of Medicine
Division of Cardiology
Director Pacemaker & ICD Service
UC San Diego Health

Jude Clancy, MD, FHRS



Associate professor at Medicine
University of Connecticut Health Center
System Director of Lead Management, Hartford HealthCare
Director of Midstate Medical Center EP Lab
Hartford HealthCare

Dwayne Campbell, MD



Electrophysiology
Iowa Heart Center
MercyOne

George H. Crossley, MD, FHRS, FACC



Professor of Medicine, Director EP Lab,
Director Cardiology Clinical Research Enterprise
Vanderbilt University Medical Center

Roger Carillo, MD



Cardiothoracic Surgery
University of Miami Hospital

Daniel C. DeSimone, MD, FIDSA



Mayo Clinic College of Medicine and Science
Professor of Medicine
Consultant, Infectious Diseases
Joint Appointment, Cardiovascular Medicine

SPEAKERS

Paari Dominic, MD



Associate Professor of Internal Medicine-
Cardiovascular Medicine
Director of Electrophysiology
Medical Director, Electrophysiology Lab
Associate Director, Cardiovascular
Disease Fellowship Program
University of Iowa Health Care

Siva Mulpuru, MD, MPH



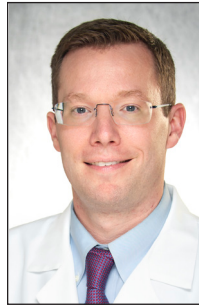
Professor of Medicine
Mayo Clinic

Ben Hale, MD



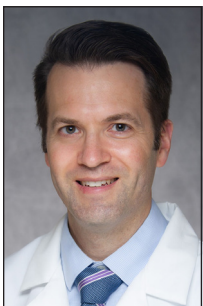
Clinical Assistant Professor of Pediatrics
Director, Pediatric Electrophysiology
Program
University of Iowa Health Care

Michael Powers, MD, MBS



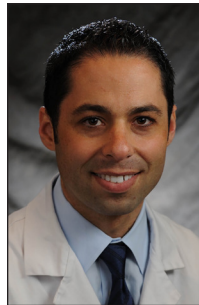
Clinical Assistant Professor of Internal
Medicine-Division of Cardiovascular
Medicine
Associate Director, Clinical Cardiology
Electrophysiology Fellowship Program
University of Iowa Health Care

Jacob Hodges, MD



Clinical Assistant Professor of Internal
Medicine-Division of Infectious Diseases
University of Iowa Health Care

Robert D. Schaller, DO



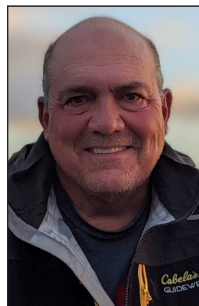
Cardiac Electrophysiologist/Associate
Professor of Medicine
Hospital of the University of Pennsylvania

Charles J. Love, MD, FACC, FAHA, FHRS, CCDS



Professor of Medicine
Director, Cardiac Rhythm Device Services
Johns Hopkins Hospital and School of
Medicine

Pierce J Vatterott, MD



Minneapolis Heart Institute East
Clinically retired/Active researcher
Minneapolis Heart Institute